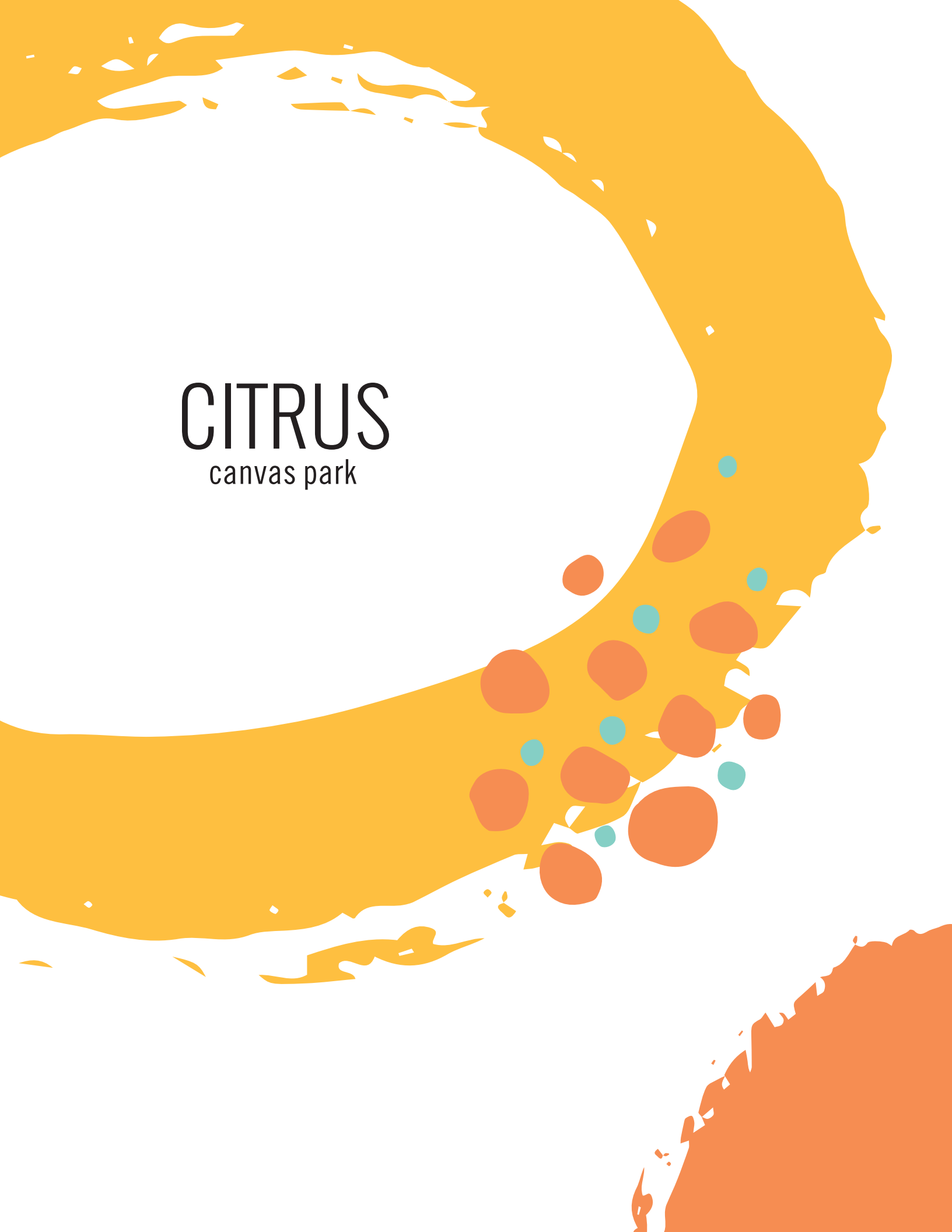


CITRUS

canvas park



NEW HAVEN *has it all!*



15+ ACRES OF PRIVATE RESORT-STYLE AMENITIES TO ENJOY

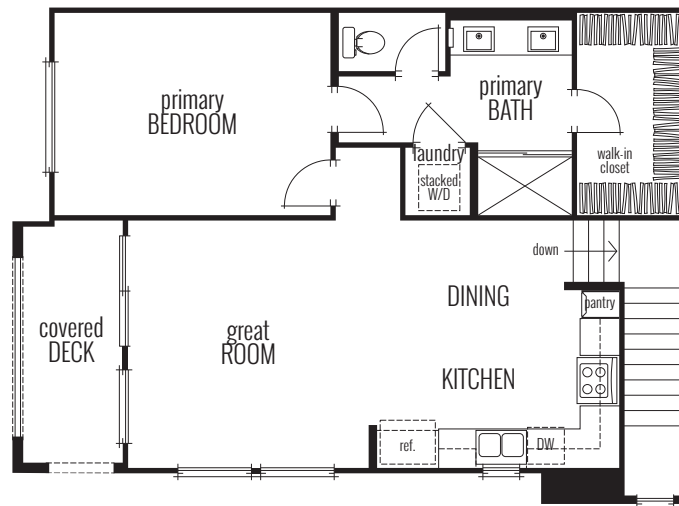
 **5 PARKS** *Community Events* **OUTDOOR FITNESS** 
SUPER PLAYGROUNDS **5 SWIMMING POOLS** *Reserveable Spaces*
Social Spaces **SPORTS COURTS** **GATED DOG PARK** 
 **BBQ AREAS** *Fire Pits* **ZIP LINE** *Picnic Gardens*



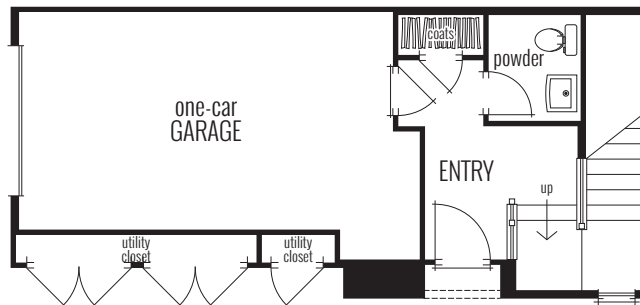
PLAN ONE

Approx. 972 Sq. Ft. • 1 Bedrooms • 1.5 Baths • Covered Deck

1-Car Garage



SECOND FLOOR

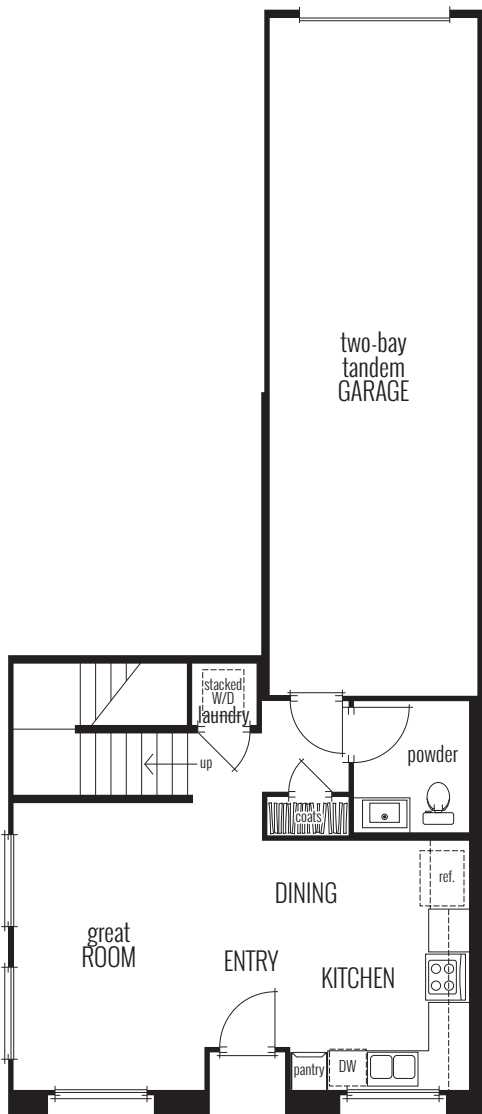


FIRST FLOOR

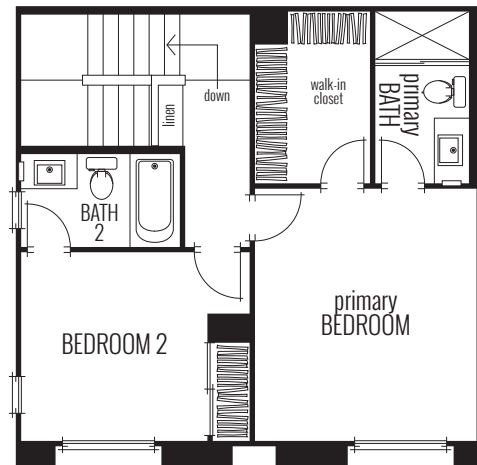
PLAN TWO

Approx. 1,110 Sq. Ft. • 2 Bedrooms • 2.5 Baths

Patio • 2-Bay Tandem Garage



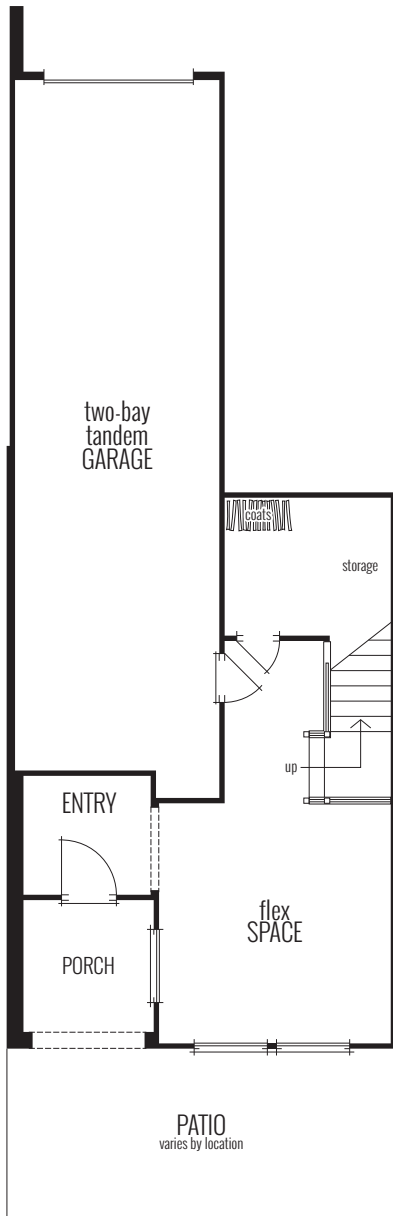
FIRST FLOOR



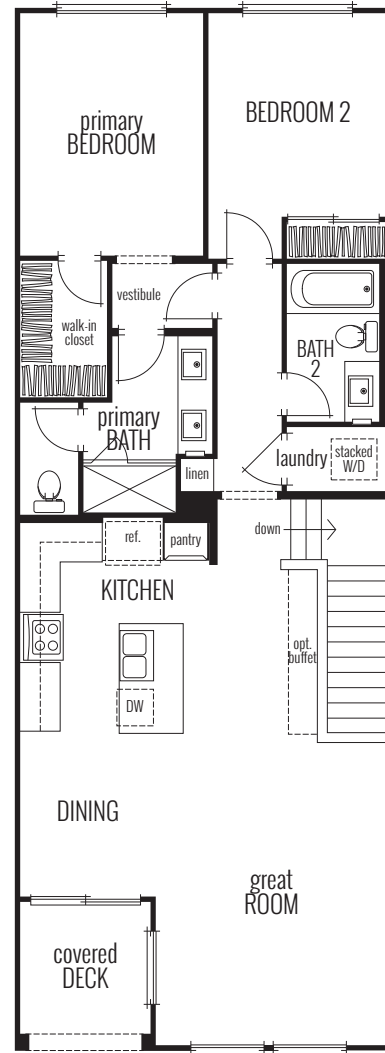
SECOND FLOOR

PLAN THREE

Approx. 1,459 Sq. Ft. • 2 Bedrooms • 2 Baths • Flex Space
Patio • 2-Bay Tandem Garage



FIRST FLOOR

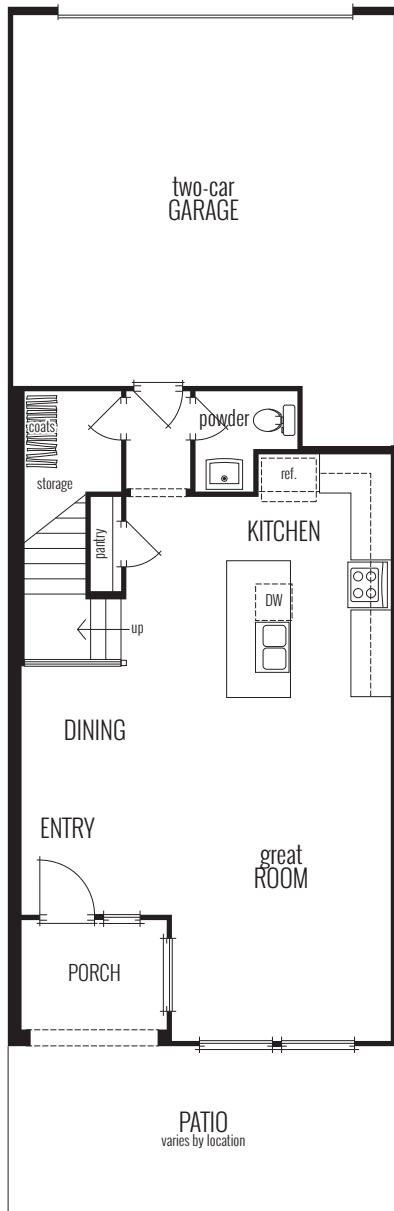


SECOND FLOOR

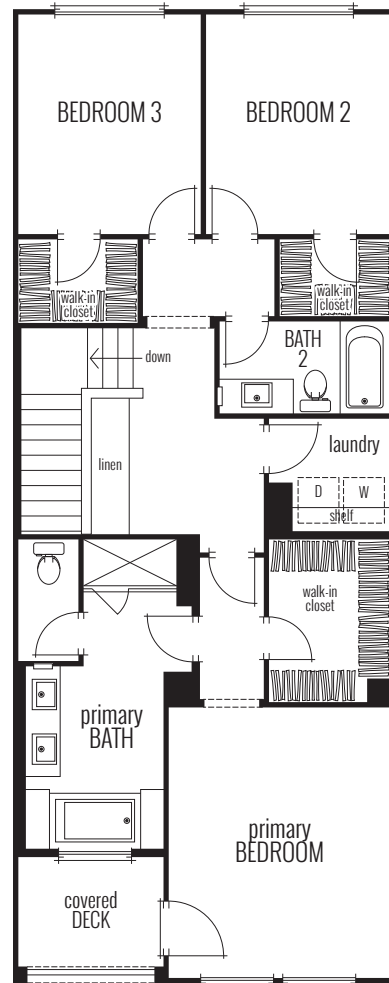
PLAN FOUR

Approx. 1,692 Sq. Ft. • 3 Bedrooms • 2.5 Baths

Front Patio • Covered Deck • 2-Car Garage



FIRST FLOOR



SECOND FLOOR

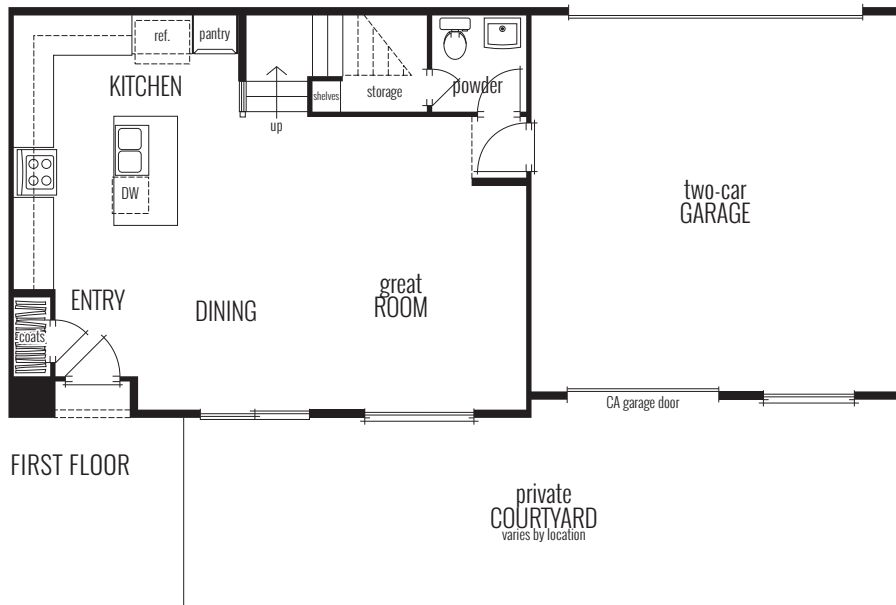
PLAN FIVE

Approx. 1,722 Sq. Ft. • 3 Bedrooms • 2.5 Baths • Private Courtyard

2-Car Garage • CA Garage Door



SECOND FLOOR

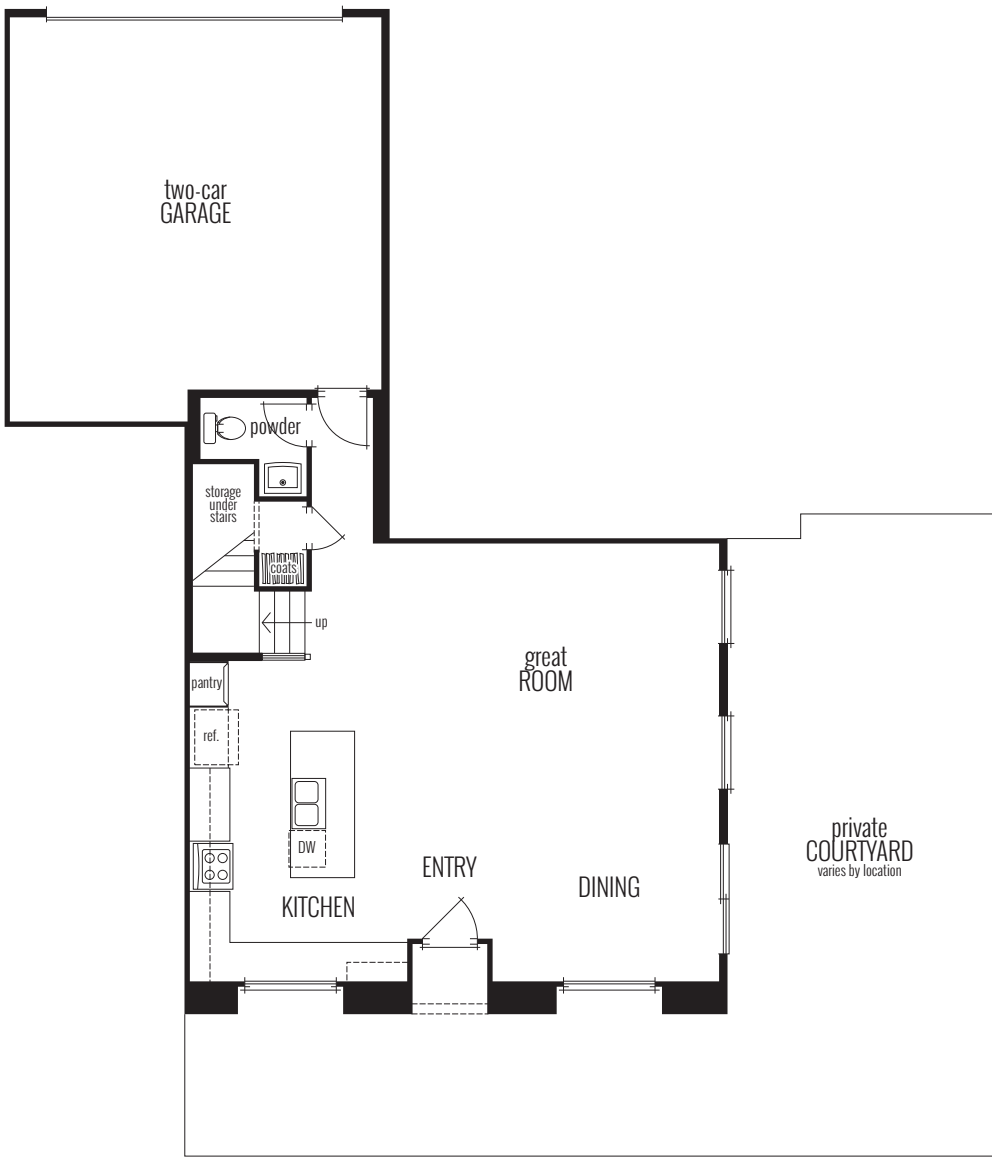


FIRST FLOOR

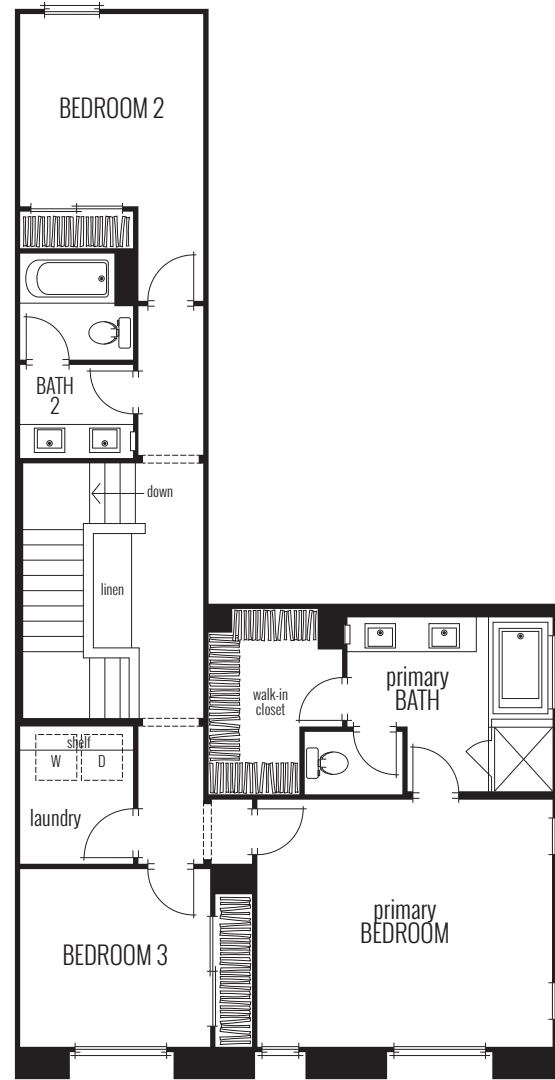
PLAN SIX

Approx. 1,799 Sq. Ft. • 3 Bedrooms • 2.5 Baths • Private Courtyard

Front Patio • 2-Car Garage



FIRST FLOOR



SECOND FLOOR

IT'S ALL IN THE *Details*

EXCEPTIONAL EXTERIORS

- A stylish street scene comprised of bold exteriors that feature
- Transitional Spanish and Modern Farmhouse inspired architecture with handsome details including exterior masonry, vertical and horizontal siding, gable vents, decorative exterior light fixtures that coordinate with architectural style and illuminated address signs varies per elevation)
- Inviting, low-maintenance 8' entry doors feature matte black hardware and playful accent paint color
- 5" pre-finished seamless aluminum rain gutters with downspouts at select locations
- Fully dry-walled garage with stylish sectional roll-up door, wifi-enabled opener and (2) three-button transmitters
- Cozy covered decks, charming front porches and/or private courtyards (at select plans)

STYLISH LIVING SPACES

- Clean-lined square wall corners
- Elegantly painted stair rails (varies per plan)
- Decorative door casings and elevated 4 ¼" baseboards throughout
- Contemporary two-panel interior doors with aged bronze hardware
- Primary bathrooms feature cultured marble countertops with 4" backsplash, integrated cultured marble rectangular sinks with Delta® two-handle widespread polished chrome faucets, shower with simulated subway tile surround, soaking tub with simulated subway tile surround (per plan), elongated toilet, convenient medicine cabinet for extra storage and door between primary bedroom and bathroom for added privacy
- Secondary bathrooms feature cultured marble countertops with 4" backsplash, rectangular sinks with Delta® two-handle center-set polished chrome faucets, tub/shower with simulated subway tile surround, elongated toilet and convenient medicine cabinet for
- extra storage
- Powder baths feature square pedestal sinks with two-handle widespread polished chrome faucets and elongated toilet (per plan)
- Laundry space with gas dryer hook-up

MODERN KITCHENS

- Stainless steel Whirlpool® appliance package includes 30" gas-range with 4 burners and single oven, 30" built-in microwave/hood over range, and 24" ENERGY STAR® multi-cycle dishwasher
- European-style white thermofoil cabinetry with raised panel doors, adjustable shelving, and concealed hinges and brushed nickel knob hardware
- Stylish square edge granite countertops with 6" backsplash and full backsplash behind cooktop available in two colors: New Caledonia or Bengal White
- Mainline® undermount stainless steel double-basin kitchen sink with Delta® Collins single handle pull-out faucet in chrome finish and food waste disposal button
- Convenient roll-out trash & recycling cabinet with two bins
- Under-cabinet task lighting

ENERGY EFFICIENCY

- Solar panel system lease to help reduce your energy consumption (and bill) while reducing your carbon footprint
- Energy efficient LED recessed lighting with Lutron® dimmer switches in throughout living areas
- Junction box with dimmers in all bedrooms for future pendant light/fan
- Low-E dual glazed vinyl windows that provide solar control and visible light transmittance, resulting in utility cost savings with increased efficiency
- Central air conditioning and heating with programmable Honeywell® Lyric™ T6 smart thermostat, creates more balance and energy conscious consumption
- High-performance WaterSense® faucets, low-flow elongated toilets and shower heads conserve water
- Energy efficient Rheem® tankless water heater with direct vent
- Radiant barrier at roof consists of a highly reflective material that reflects heat rather than absorbing, thereby creating a more energy efficient home
- Pre-plumb for future electric vehicle charging station in garage

TECHNOLOGY

- myCommand smart home package includes:
 - ♦ Schlage® Sense™ smart deadbolt front door lock with illuminated touch screen allows for keyless entry
 - ♦ Honeywell® Lyric™ T6 Thermostat allows you to control your home from your smart device from anywhere, can be programmed based on your needs or adapt to your schedule, ensuring maximum comfort when you're at home and saving money on your energy bills when you're away
 - ♦ Lutron® lighting system at entry, first floor stairs, great room, dining and kitchen
 - ♦ LiftMaster® WiFi-enabled garage door opener with MyQ® HomeBridge connects with Apple® HomeKit
 - ♦ Wireless Access Points to optimize your wireless coverage throughout your home
- Fiber-optic cable connections for internet access that's three times faster than most high-speed services
- USB outlets at kitchen and primary bedrooms for convenient way to charge your devices
- Technology pre-wiring with multiple enhanced Category 6e data wire to allow for phone lines or high speed data connection in primary bedroom, great room and kitchen
- In-wall wiring prep for flatscreen TV at great room

STYLE MADE SIMPLE

Your home is the ultimate expression of your style. That's why we've made it easier than ever to stay on trend. Say hello to Style Made Simple from Brookfield Residential: new signature design suites curated to meet your budget and match your tastes. Each complete with modern features, finishes and flooring that take effortless to a whole new level. All hand-selected by our professional designers. So you can spend less time deciding—and more time celebrating.



THE BROOKFIELD RESIDENTIAL *Difference*


From day one, the perks begin with your very own Homebuyer portal to track photos of your new home construction and a designated New Home Concierge who will provide complimentary moving boxes, assist with utility setup and help navigate your new home move. Throughout the construction process, you will meet with the team to walk your new home at framing and then meet our Customer Care team for the Homeowner Orientation walk before close of escrow. Enjoy peace of mind with Brookfield Residential's "Fit and Finish" warranty long after you move in.

Style **MADE SIMPLE**

Your home is the ultimate expression of your style. That's why we've made it easier than ever to stay on trend. Say hello to Style Made Simple from Brookfield Residential: new signature design suites curated to meet your budget and match your tastes. Each complete with modern features, finishes and flooring that take effortless to a whole new level. All hand-selected by our professional designers. So you can spend less time deciding and more time celebrating.

My **COMMAND**

You'll love that your new home features the latest home automation products such as front door locks, lights, garage door openers and thermostats. These products work with the trilingual app in iOS and offer a simple, secure and convenient way to control your home from anywhere.





CREATING THE *Best Places* TO CALL HOME

Brookfield Residential is committed to being more than a homebuilder. We strive to create the best places to call home. The Brookfield Residential Southern California team has the passion, the expertise and the local knowledge to craft homes and neighborhoods that speak to the homebuyers at every stage of life. We are an award-winning homebuilder and industry leader with an exceptional reputation for quality, design and customer service.

Brookfield Residential Properties Inc. is a leading land developer and homebuilder in North America. We entitle and develop land to create master-planned communities, sell lots to third-party builders and operate our own home building division. We also participate in select strategic real estate opportunities, including infill projects, mixed-use developments and joint ventures. We are the flagship North American residential property company of Brookfield Asset Management, a leading global alternative asset manager.

[BrookfieldResidential.com](https://www.BrookfieldResidential.com) 844.390.9521

3911 S. Jolly Paseo #193, Ontario, CA 91761

AUSTIN CALGARY DENVER EDMONTON HAWAII KANSAS CITY LOS ANGELES PHOENIX
SACRAMENTO SAN DIEGO SAN FRANCISCO TORONTO WASHINGTON DC



CANVAS PARK
new haven



Front and rear elevations differ by building type and create variations in livable square feet. Stated dimensions are approximate estimates and not intended for space planning purposes. Brookfield Residential reserves the right, in its sole discretion, to change sales price and add, delete or modify floor plans, elevations, maps, specifications, features, options, materials, design, colors and incentives without notice or obligation. Square footages may vary. Window sizes and location and front entry porch/wall configurations vary based upon exterior elevations. Stated dimensions are approximate estimates and not intended for space planning purposes. Optional features are subject to construction cut-off dates. All maps, plans, landscaping and elevation renderings are an artist's conception and are not to scale. See sales counselor for details. Equal opportunity housing. ©2023 Brookfield Residential. DRE License #01896289. 2/2023

**Brookfield
Residential**